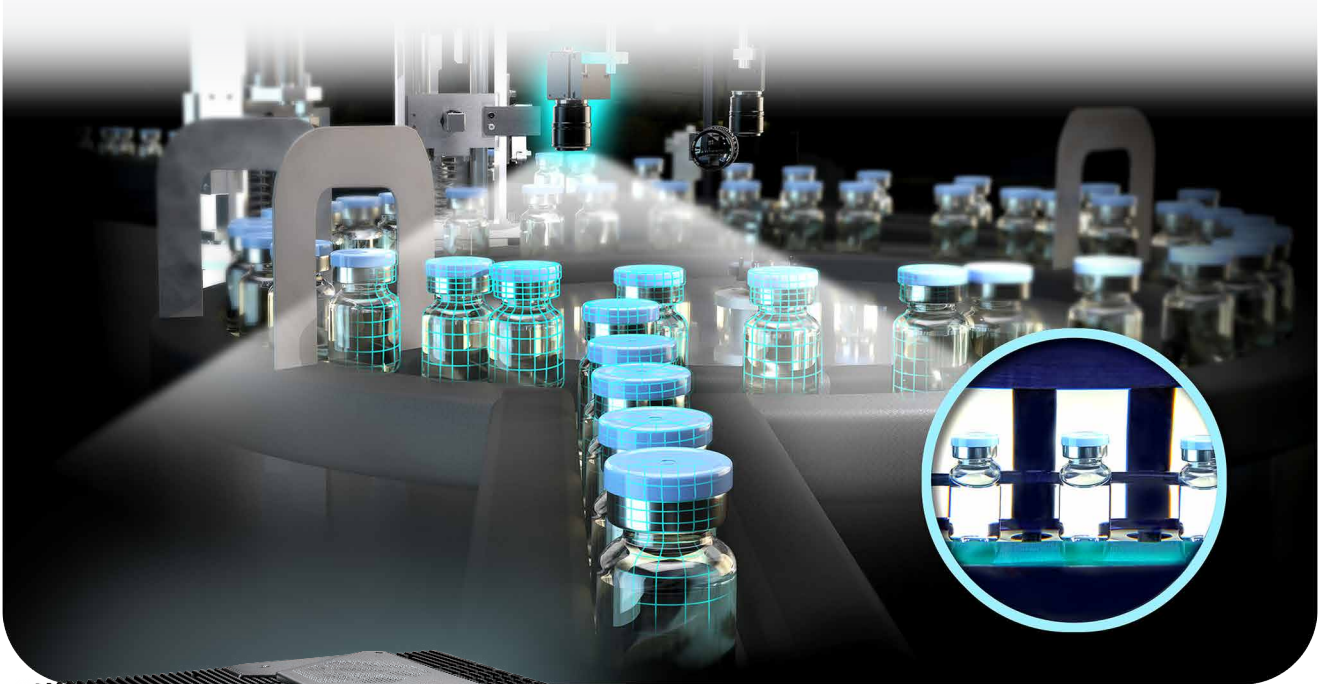


ECX

2400 AI



Workstation-grade Intel® Xeon®/Core™ i9/i7/i5/i3 (Comet Lake)
AI Computing System with Independent AI accelerators



Smart AOI



- Workstation-grade Platform :
10-core 10th Gen Intel® Xeon®/Core™ i9/i7/i5/i3 Processor (CML-S) with Intel® W480E chipset, up to 95W TDP CPU
- Built-in independent AI accelerator card, which replaces power-hungry desktop GPU delivering low latency with excellent power productivity, supporting up to 64 TOPS
- 12V to 50V wide range DC Power Input, 80V Surge Protection
- Supports Configurable Software Ignition Control and TPM 2.0
- Optional VHub AIoT Solution Service supports OpenVINO based AI accelerator and advanced Edge AI applications

Public Surveillance



Robotic Control

intel
partner
Gold
IoT Solutions



Vecow

Specifications

System

Processor	10th Gen Intel® Xeon®/Core™ i9/i7/i5/i3 Processor (Comet Lake-S)
Chipset	Intel® W480E
BIOS	AMI
SIO	IT8786E
Memory	2 DDR4 2933MHz Memory, up to 64GB (ECC/Non-ECC)
OS	Windows 10, Linux

I/O Interface

Serial	4 COM RS-232/422/485 (ESD 8kV)
USB	6 USB 3.2 (External)
Isolated DIO	32 Isolated DIO : 16 DI, 16 DO
LED	Power, HDD, PoE, Wireless
SIM Card	3 External Nano SIM Card Socket

Expansion

Mini PCIe	2 Mini PCIe sockets for PCIe/USB/SIM Card/Optional mSATA
PCIe	1 PCIe x4 Slot
M.2	- 1 M.2 Key B Socket (2280/3042/3052, PCIe x2/USB3/USB2) - 1 M.2 Key E Socket (2230, PCIe/USB)

AI Acceleration

AI Accelerator	Single-core PCIe AI Inference Accelerator Card
	- Fully software programmable using AI Software Suite
	- 16 Graph Streaming Processor cores
	- 16 Int8 Inference TOPS
AI Accelerator	Quad-core PCIe AI Inference Accelerator Card
	- Fully software programmable using AI Software Suite
	- 64 Graph Streaming Processor cores
	- 64 Int8 Inference TOPS

Storage

SATA	4 SATA III (6Gbps) support S/W RAID 0, 1, 5, 10
mSATA	2 SATA III (Mini PCIe Type, 6Gbps)
M.2	1 M.2 Key M Socket (2280, PCIe x2/SATA)
Storage Device	- 1 Micro SD Card, Push-in/Push-out Ejector - 4 Front-access 2.5" SSD/HDD Tray

Audio

Audio Codec	Realtek ALC888S-VD, 7.1 Channel HD Audio
Audio Interface	1 Mic-in, 1 Line-out

Ethernet

LAN 1	Intel® I219LM GigE LAN supports iAMT 14.0
LAN 2	Intel® I210 GigE LAN

PoE

LAN 3 to LAN 6	GigE IEEE 802.3at (25.5W/48V) PoE+ by Intel® I350
----------------	---

Power

Power Input	DC 12V to 50V
Power Interface	3-pin Terminal Block : V+, V-, Frame Ground
Ignition Control	16-mode Software Ignition Control
Remote Switch	3-pin Terminal Block
Surge Protection	Up to 80V/1ms Transient Power

Others

TPM	Infineon SLB9665 supports TPM 2.0, LPC Interface
Watchdog Timer	Reset : 1 to 255 sec./min. per step
Smart Mgmt.	Wake on LAN, PXE supported
HW Monitor	Monitoring temperature, voltages. Auto throttling control when CPU overheats.

Mechanical

Dimensions	260mm x 240mm x 104mm (10.2" x 9.4" x 4.1")
Weight	5.5 kg (12.13 lb)
Mounting	- Wallmount by mounting bracket - DIN Rail Mount (Optional)

Environment

Operating Temp.	35W & 65W TDP CPU : -20°C to 70°C (-4°F to 157°F), with System Fan 80W & 95W TDP CPU : -20°C to 70°C (-4°F to 157°F), with Fan Sink and System Fan
Storage Temp.	-40°C to 85°C (-40°F to 185°F)
Humidity	5% to 95% Humidity, non-condensing
Relative Humidity	95% @70°C
Shock/Vibration	- IEC 61373 : 2010 - Railway Applications : Rolling Stock Equipment, Shock and Vibration Tests
EMC	CE, FCC, EN50155, EN50121-3-2

* All product information may subject to change without prior notice.

* The rights of all brand names, product names and trademarks belong to their respective owners.
Copyright © 2023 Vecow Co., Ltd. All rights reserved.

Order Information

Model	AI Core	TOPS	LAN		PCIe	System Fan	Fan Sink
			GigE	PoE+			
ECX-2400 AI-P	1	16	6	4	x4	Y	-
ECX-2400F AI-P	1	16	6	4	x4	Y	Y
ECX-2400 AI-PQ	4	64	6	4	x4	Y	-
ECX-2400F AI-PQ	4	64	6	4	x4	Y	Y

** Fan Sinks are required for high TDP CPU systems (80W, 95W)

CPU List

Series	CPU	GHz	TDP (W)	CPU	GHz	TDP (W)	ECC RAM
Intel® Xeon®	W-1290E	4.8	95	W-1290TE	4.5	35	Y
	W-1270E	4.8	80	W-1270TE	4.4	35	Y
	W-1250E	4.7	80	W-1250TE	3.8	35	Y
Intel® Core™	i9-10900E	4.7	65	i9-10900TE	4.5	35	N/A
	i7-10700E	4.5	65	i7-10700TE	4.4	35	N/A
	i5-10500E	4.2	65	i5-10500TE	3.7	35	N/A
	i3-10100E	3.8	65	i3-10100TE	3.6	35	Y

Optional Software

VHub AI Developer	AI Development Kit
VHub ROS	AMR Development Kit
VHub EtherCAT	I/O Control Platform

Accessories

DDR4 32G	Certified DDR4 32GB 3200MHz RAM
DDR4 16G	Certified DDR4 16GB 3200MHz RAM
DDR4 8G	Certified DDR4 8GB 3200MHz RAM
DDR4 4G	Certified DDR4 4GB 3200MHz RAM
PWA-160WB-WT	160W, 24V, 85V AC to 264V AC Power Adapter with 3-pin Terminal Block (7.62mm pitch), Wide Temperature -30°C to +70°C
PWA-180WB	180W, 24V, 90V AC to 264V AC Power Adapter with 3-pin Terminal Block
PWA-280WB-WT	280W, 24V, 85V AC to 264V AC Power Adapter with 3-pin Terminal Block (7.62mm pitch), Wide Temperature -30°C to +70°C
PWA-330WB	330W, 24V, 90V AC to 264V AC Power Adapter with 3-pin Terminal Block
PWS-480W-WT	480W, 24V, 90V AC to 305V AC Power Supply, Wide-Temp, IP65
VESA Mount	VESA Mounting Kit
DIN-RAIL	DIN Rail and VESA Mounting Kit
TMK2-20P-100	Terminal Block 20-pin to Terminal Block 20-pin Cable, 100cm
TMK2-20P-500	Terminal Block 20-pin to Terminal Block 20-pin Cable, 500cm
TMB-TMBK-20P	Terminal Board with One 20-pin Terminal Block Connector and DIN-Rail Mounting
5G Module	5G Module with Antenna
4G Module	4G/GPS Module with Antenna
WiFi & Bluetooth	WiFi & Bluetooth Module with Antenna

Dimensions & Drawing

Unit : mm (inch)

